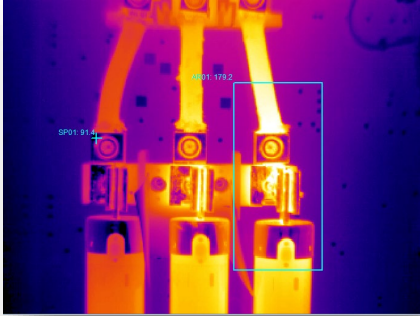


# RISK CONTROL CONSULTING



## Electrical Infrared Surveys

An Electrical Infrared Survey is using an Infrared Imaging device to locate potential electrical issues that would otherwise be invisible until there is a major problem.

Infrared surveys can help locate: Loose connections, loose fuse clip assemblies, overloaded circuits, faulty breakers, loose/faulty disconnect knives, phase imbalance, and bus connections.

Electrical systems are subject to many different conditions that can lead to electrical problems. An Infrared Survey will help find those problems at an early stage, before they cause failure or serious damage.

### Infrared imaging can be successfully applied to the following types of solutions:

- **Predictive Maintenance** – scan electrical and mechanical equipment for trouble spots so they can be repaired before they fail.
- **Preventative Maintenance** – monitor limited life components to predict and schedule replacement before failure.
- **Roof Moisture Analysis** – pinpoint leaks for repair saving thousands of dollars on a roof replacement.
- **Building Heat Loss Analysis** – find damaged, missing or deteriorating insulation in walls, windows and roofs that cause major heat loss.
- **Acceptance Testing and Quality Control** – scan new equipment to find faults or defective workmanship.

Reports are now accessible online. This new feature allows the user to monitor repairs, identify reoccurring issues and share the information with other staff members in one central location.

This Tribal First Risk Control Consulting fact sheet is not intended to be exhaustive. The discussion and best practices suggested herein should not be regarded as legal advice. Readers should pursue legal counsel or contact their insurance providers to gain more exhaustive advice. For more information on this topic, please contact Tribal First Risk Control Consulting at (888) 737-4752 or [riskcontrol@tribalfirst.com](mailto:riskcontrol@tribalfirst.com).